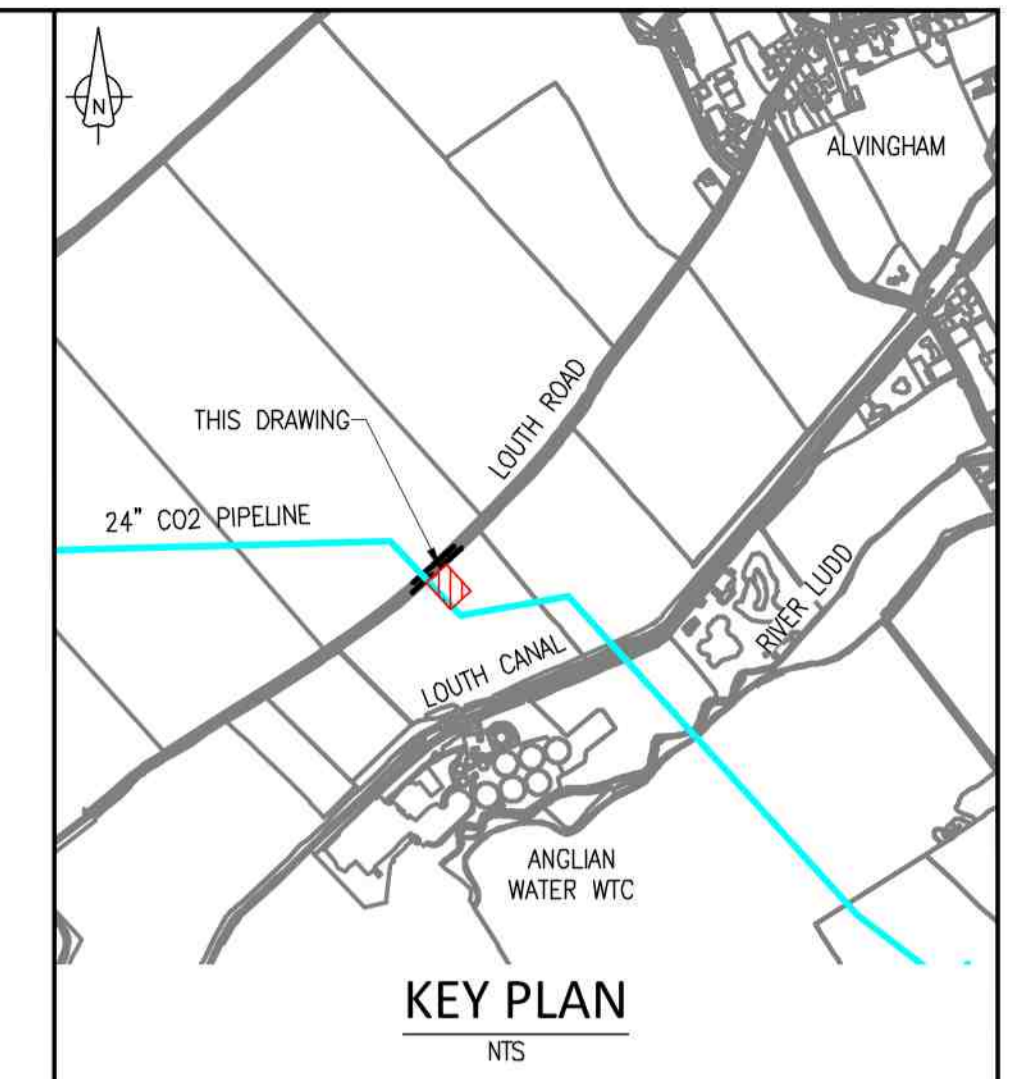
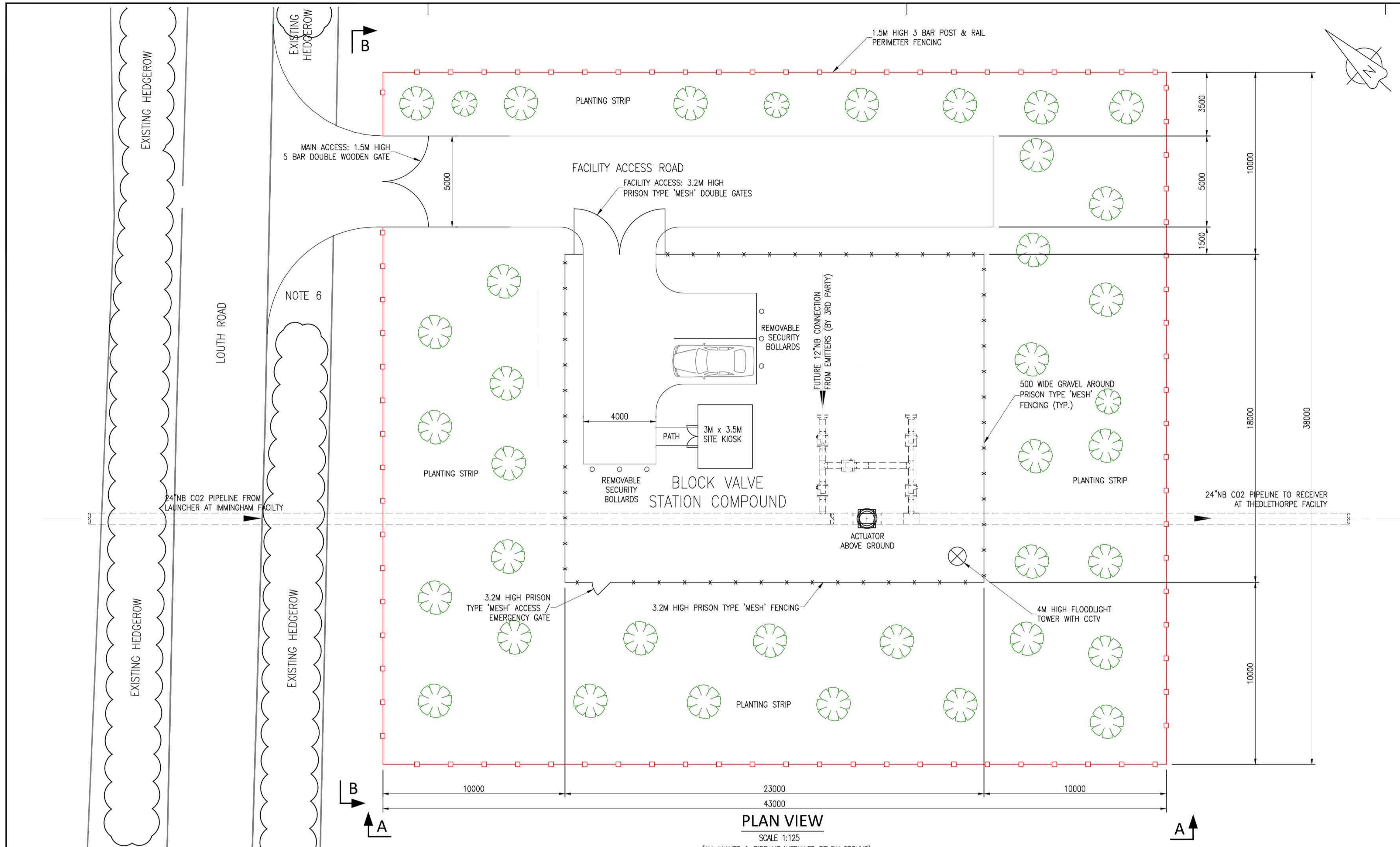


## Viking CCS Pipeline

# 4.16 Louth Road Block Valve Station Plan and Elevations - Revision A

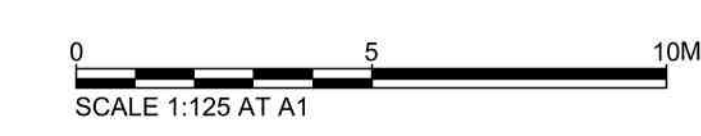
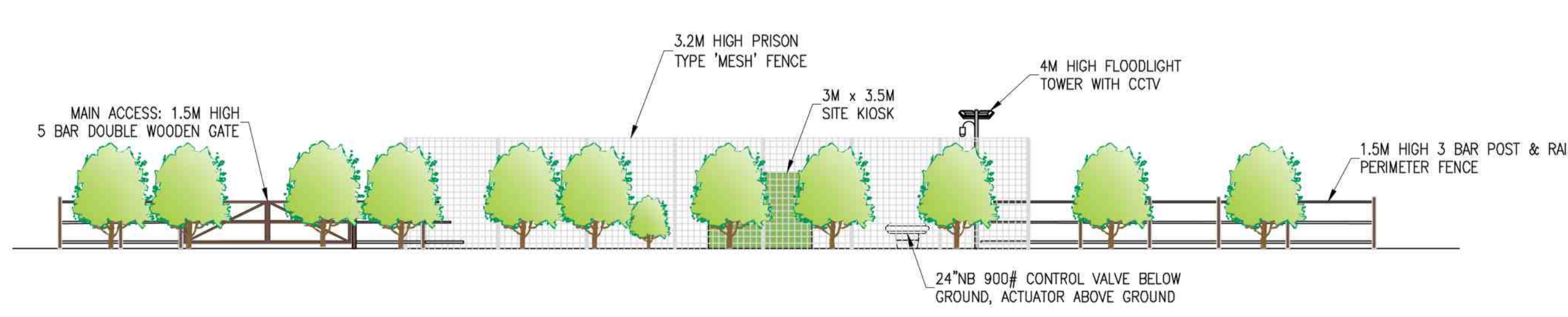
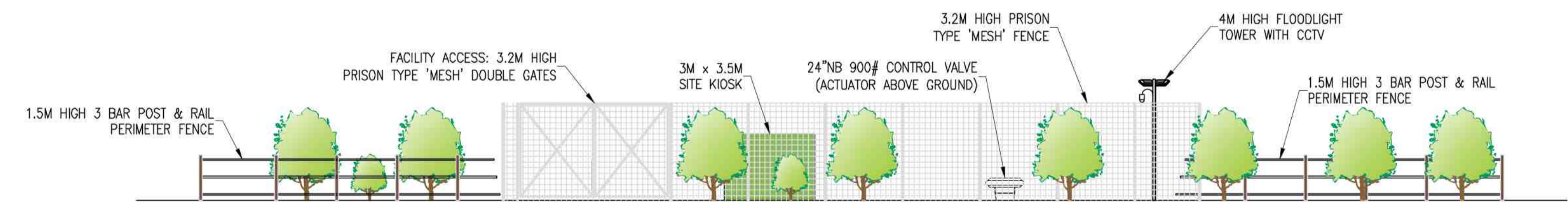
Document Reference: EN070008/APP/4.16

Applicant: Chrysaor Production (U.K.) Limited,  
a Harbour Energy Company  
PINS Reference: EN070008  
Planning Act 2008 (as amended)  
The Infrastructure Planning (Applications: Prescribed Forms  
and Procedure) Regulations 2009 - Regulation 5(2)(o)  
Date: July 2024



- GENERAL NOTES**
1. ALL PIPELINE LAYOUTS AND DIMENSIONS ARE INDICATIVE/PRELIMINARY AND WILL BE UPDATED DURING FEED DESIGN.
  2. PLOT ARRANGEMENT IS INDICATIVE ONLY.
  3. EQUIPMENT LAYOUT IS PRELIMINARY AND WILL BE CONFIRMED DURING FEED DESIGN.
  4. ALL PIPEWORK AND VALVES ARE TO BE INSTALLED BELOW GROUND WITH CONTROL ACTUATOR INSTALLED ABOVE GROUND.
  5. BVS DRAINAGE SYSTEM SHALL BE SOAKAWAY TYPE.
  6. LAY-BY PARKING AREA SUBJECT TO LOCAL PLANNING AUTHORITY APPROVAL.

Rev	Rev. Date	Purpose of Revision	Drawn	Checked	Appr'd
4	25/07/2024	RE-ISSUED FOR INFORMATION	DD	AM	AR
3	06/07/2023	RE-ISSUED FOR INFORMATION	GS	GM	MH
2	07/06/2023	RE-ISSUED FOR INFORMATION	TD	GM	MH
1	19/05/2023	ISSUED FOR INFORMATION	DD	GM	MH
0	21/04/2023	ISSUED FOR REVIEW	TD	GM	MH



Penspen  
c/o Dar Al-Handasah  
150 Holborn  
London  
EC1N 2NS  
England, UK.

**PENSPEN**

Client  
Chrysaor Production (UK) Limited  
23 Lower Belgrave Street  
London SW1W 0NR  
United Kingdom

**Viking CCS**

Project  
**VIKING CCS PIPELINE**

Drawing title  
LOUTH ROAD  
BLOCK VALVE STATION  
(BVS3)  
Regulation 5.2 (o)  
Application Document Reference 4.16  
(Sheet 1 of 1)

Drawing status  
**ISSUED FOR INFORMATION**

Scale	AS SHOWN	DO NOT SCALE
Sheet Number	01 / 01	Original Sheet Size A1
Penspen Drawing Number	20428-CI-XLY-000-0008	Rev 4
Viking CCS Pipeline Drawing Number	PEN-GEN-P-XX-X-EN-51-00009-01	Rev D4

INFORMATION CONTAINED IN THIS DOCUMENT IS CONFIDENTIAL AND PROPRIETARY TO VIKING CCS PIPELINE OR ITS APPLICANTS AFTER BEING PREPARED BY PENSPEN LIMITED OR ITS APPLICANTS. PENSPEN AND ITS APPLICANTS DO NOT MAKE ANY REPRESENTATION OR WARRANTY AND SHALL NOT BE LIABLE IN ANY WAY WITH RESPECT TO THE INFORMATION CONTAINED HEREIN OR THE USE THEREOF. THE INFORMATION SHALL NOT BE REPRODUCED, COPIED, LOANED, EMITTED, DISCLOSED OR USED IN WHOLE OR IN PART WITHOUT THE PRIOR WRITTEN CONSENT OF VIKING CCS PIPELINE OR PENSPEN. THE DOCUMENT AND ANY COPIES THEREOF SHALL BE RETURNED OR DESTROYED ON REQUEST OF VIKING CCS PIPELINE OR PENSPEN.